

# Fact Sheet 2006 ( As of June 30, 2006 )

Cover

## Fact Sheet 2006

As of June 30, 2006



**SHIMANO**

# Fact Sheet 2006 (As of June 30, 2006)

## Company Profile

### Company Profile and Organization (As of June 30, 2006)

**Company Name**  
SHIMANO INC.

**Head Office**  
3-77 Oimatsu-cho, Sakai-ku, Sakai City  
Osaka 590-8577, Japan  
(Human Resources & General Affairs)  
Phone:+81-72-223-3210 Fax:+81-72-223-3258  
(Corporate Communications)  
Phone:+81-72-223-3957 Fax:+81-72-223-6045

**URL: www.shimano.com**

**Date of Establishment**  
February 1921

**Date of Incorporation**  
January 1940

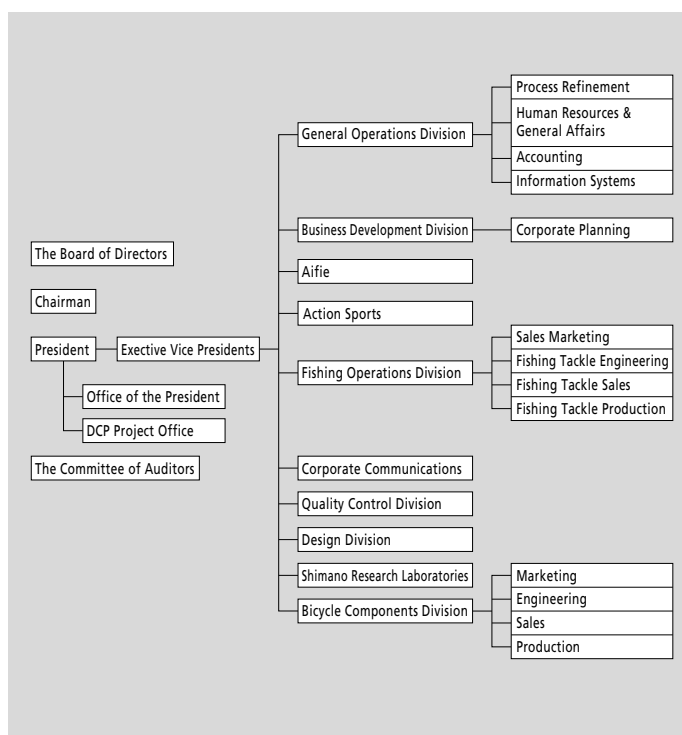
**Paid-in Capital**  
JPY 35.6 billion

**Number of Employees**  
994 (Shimano Inc. only) (As of Jun. 30, 2006)  
6,953 (Consolidated) (As of Jun. 30, 2006)

**Stock Exchange Listings**  
The First Section of the Tokyo Stock Exchange  
The First Section of the Osaka Securities Exchange

**Description of Business**  
Production and distribution of bicycle components, fishing tackle, cold forging products and snowboard equipment.

**Operations**  
30 bases in 22 nations/region  
Factories : 14 in 9 nations



### The Board of Directors

<b>Chairman</b>	Yoshizo Shimano
<b>President</b>	Yozo Shimano
<b>Executive Vice Presidents</b>	Shinji Fukuoka Chitoshi Yuge
<b>Directors</b>	Takeshi Oi Keiji Kakutani Hideo Yamashima Fuminori Yoshida Chiam Yau Teng Satoshi Yuasa Shinji Wada Kazuo Ichijo Koichi Shimazu Yoshihiro Hirata Etsuyoshi Watarai
<b>Corporate Auditors</b>	Yoshinori Kajiyama Nobutsugu Fuchizawa Toshikuni Hirose Takayo Tsujinaka

### Overseas Subsidiaries and Affiliates

#### Manufacturing

Shimano (Singapore) Pte. Ltd.	(Singapore)
Shimano Components (Malaysia) Sdn. Bhd.	(Malaysia)
Shimano (Mersing) Sdn. Bhd.	(Malaysia)
P.T. Shimano Batam	(Indonesia)
Shimano (Kunshan) Bicycle Components Co.,Ltd.	(China)
Shimano (Kunshan) Fishing Tackle Co., Ltd.	(China)
Shimano (Tianjin) Bicycle Components Co.,Ltd.	(China)
Wooyun Co.,Ltd.	(Korea)
Shimano Czech Republic s.r.o.	(Czech)
Shimano Italia S.p.A.	(Italia)
G.Loomis Products, Inc.	(U.S.A.)

#### Sales and Marketing

Shimano American Corporation	(U.S.A.)
Shimano Canada Ltd.	(Canada)
Shimano Europe Holding B.V.	(The Netherlands)
Shimano Europe B.V.	(The Netherlands)
Shimano Europe Fishing Holding B.V.	(The Netherlands)
Shimano Benelux B.V.	(The Netherlands)
Shimano France Composants Cycles S.A.S.	(France)
Shimano Belgium N.V.	(Belgium)
Shimano Germany Fishing GmbH.	(Germany)
Shimano U.K. Ltd.	(U.K.)
Shimano Italy Fishing S.r.l.	(Italia)
Shimano Taiwan Co.,Ltd.	(Taiwan)
Shimano (Shanghai) Bicycle Components Co.,Ltd.	(China)
Shimano Australia Pty. Ltd.	(Australia)
Shimano Oceanic Ltd.	(New Zealand)
Dunphy Holding Pty. Ltd.	(Australia)
OOO Shimano Eurasia	(Russia)
Shimano Nordic Cycle AB	(Sweden)
Shimano Nordic Cycle OY	(Finland)
Shimano Nordic Cycle AS	(Norway)

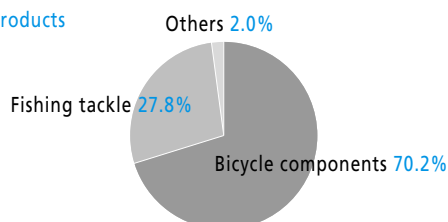
# Fact Sheet 2006 ( As of June 30, 2006 )

## Financial Date

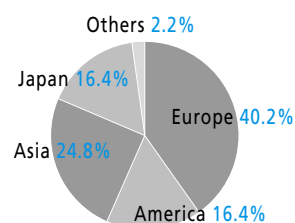
### Consolidated Financial Data (As of June 30, 2006) \*Shimano Inc. and 32 consolidated subsidiaries

#### Segment Information of Net Sales

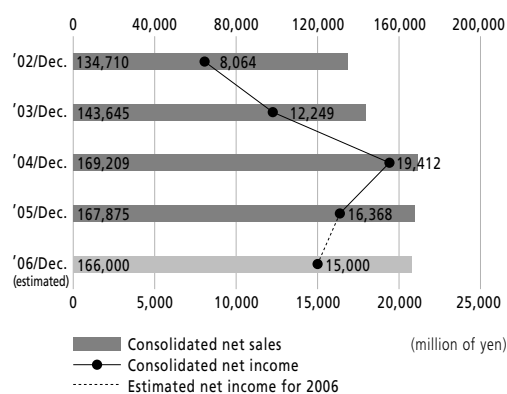
##### By Products



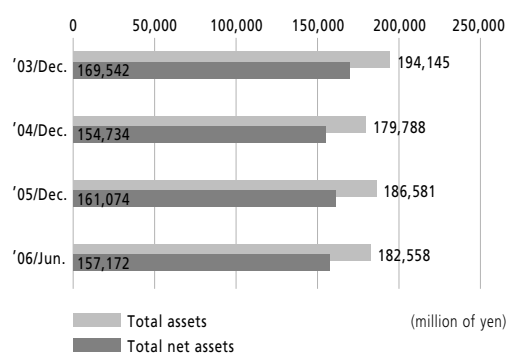
##### By Region



#### Consolidated Net Sales and Net Income



#### Total Assets and Total Net Assets



#### Consolidated Balance Sheet

	Balance at Jun. 30, 2006	Balance at Jun. 30, 2005
<b>ASSETS</b>		
Current assets	109,442	119,365
Investments and other		
Property, Plant and equipment	73,115	63,556
<b>TOTAL ASSETS</b>	<b>182,558</b>	<b>182,922</b>
<b>LIABILITIES</b>		
Current liabilities	21,547	20,072
Long-term liabilities	3,838	3,247
<b>TOTAL LIABILITIES</b>	<b>25,385</b>	<b>23,320</b>
<b>NET ASSETS</b>		
Shareholders' equity	150,020	163,082
Valuation and translation adjustments	6,587	△ 3,909
Minority interest	565	428
<b>TOTAL NET ASSETS</b>	<b>157,172</b>	<b>159,601</b>
<b>TOTAL LIABILITIES AND NET ASSETS</b>	<b>182,558</b>	<b>182,922</b>

(million of yen)

#### Consolidated Statements of Income

	Jan. 1, 2006 to Jun. 30, 2006	Jan. 1, 2005 to Jun. 30, 2005
Net sales	80,489	85,025
Operating income	9,741	13,444
Income before income taxes	9,226	13,595
Net income	6,434	9,357

(million of yen)

#### Consolidated Statement of Cash Flows

	Jan. 1, 2006 to Jun. 30, 2006	Jan. 1, 2005 to Jun. 30, 2005
Cash flows from operating activities	10,935	11,584
Cash flows from investing activities	△ 4,720	△ 4,280
Cash flows from financing activities	△ 11,229	△ 6,727
Effect of exchange rate changes on cash and cash equivalents	355	1,713
Net increase(decrease) in cash and cash equivalents	△ 4,659	2,289
Cash and cash equivalents at beginning of the period	48,015	52,113
Increase in cash and cash equivalents is based on new net	—	128
Cash and cash equivalents at end of the period	43,355	54,530

(million of yen)

# Fact Sheet 2006 ( As of June 30, 2006 )

## Key Events in Shimano History



1921  
The founder and "3.3.3." freewheel



1957  
Production of 3-speed hub begins



1965  
The first overseas sales company established in New York city



1973  
The first overseas factory established in Singapore



1992  
The bicycle museum is inaugurated in Sakai city



2003  
The third factory in China established in Tianjin

## Key Events in Shimano History

- 1921 Shozaburo Shimano establishes Shimano Iron Works.  
Begins production of the bicycle freewheel.
- 1940 The company is incorporated. The name is changed to Shimano Iron Works Co., Ltd.
- 1956 Production of external speed changer (the first Shimano derailleur) begins.
- 1957 Production of internal speed changer (3-speed Hub) begins.  
Research on cold forging begins.
- 1965 Shimano American Corporation is established in New York.  
Shimano exhibits at Milan Bicycle Show in Italy  
(the start of full-fledged sales in Europe).
- 1970 Shimano Yamaguchi Co., Ltd. is established in Yamaguchi Prefecture, Japan.  
Fishing Tackle Division is launched.
- 1972 Shimano (Europa) GmbH. is established in Dusseldorf, West Germany.  
Stock is listed on 2nd Section of the Osaka Securities Exchange.  
Corporate Identity System is introduced and logo mark etc. are unified.
- 1973 Shimano (Singapore) Pte. Ltd. is established in Jurong, Singapore.  
Stock listing moved to 1st Section of both Tokyo and Osaka Securities Exchanges.  
Shimano comes out with Dura-Ace series of road racing components.  
The Shimano-Frandria professional racing team, which is the first such sponsored team by Japanese company, is formed in Europe.
- 1978 Bantam series of reels are released.
- 1982 The Deore XT series for MTB is released.
- 1984 A new Dura-Ace series equipped with the groundbreaking Shimano Index System (SIS) for shifting is born.
- 1988 Shimano U.K. Ltd. is established, starts sales of fishing tackle in Europe.
- 1990 Shimano Components (Malaysia) Sdn. Bhd. is established.  
SPD (Shimano Pedaling Dynamics) is released.  
STI concept Dura-Ace dual control levers are released.
- 1991 Corporate name is changed from Shimano Industrial Works to Shimano Inc.
- 1992 Shimano (Kunshan) Bicycle Components Co., Ltd. is established in Kunshan, China.  
The Cycle center (Bicycle Museum) opens.  
The Stella reel, equipped Shimano Balance Lock (SBL) is released.
- 1997 Action Sports Division is launched.  
The stock of G.Loomis Products, Inc. is acquired.
- 1998 The stock of Alfred Thun S.p.A. is acquired and the name is changed to Shimano Italia S.p.A.  
The Aifie golf shop is opened.
- 2001 80th Anniversary of Shimano  
Shimano (Shanghai) Bicycle Components Co., Ltd. is established in Shanghai, China.  
Shimano Czech Republic s.r.o. is established in Czech.
- 2003 Shimano (Kunshan) Fishing Tackle Co., Ltd. is established in Kunshan, China.  
Shimano (Tianjin) Bicycle Components Co., Ltd. is established in Tianjin, China.  
OOO Shimano Eurasia is established in Moscow, Russia.
- 2005 Shimano Kumamoto Co., Ltd. is established.  
Acquired the stocks of Hallman Sports AB (present Shimano Nordic Cycle AB) and Hallman Sports O.Y. Established sales firms in the three Scandinavian countries.